

# State of Wyoming Corner Record

(in compliance with the CORNER PERPETUATION AND FILING ACT, Wyoming Statutes, 1997, Section 33-29-140, et. seq. and the Rules and Regulations of the Board of Registration for Professional Engineers and Professional Land Surveyors)

Reverse side of this form may be used if more space is needed.

Record of original survey and citation of source of historical information (if corner is lost or obliterated). Description of corner monumentation evidence found and/or monument and accessories established to perpetuate the location of this corner. Sketch of relative location of monument, accessories, and reference points with course and distance to adjacent corner(s) (if determined in this survey). Method and rationale for reestablishment of lost or obliterated corner.

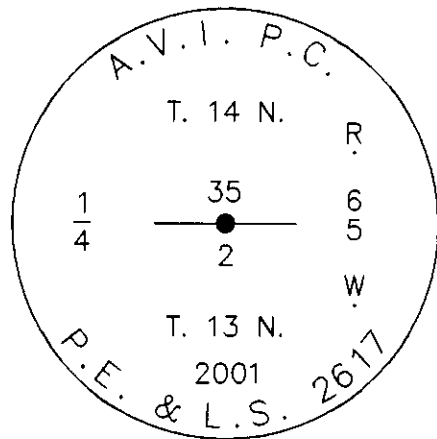
FOUND: NO EVIDENCE OF THE ORIGINAL CORNER

G.L.O. RECORD: SANDSTONE 20"x 10"x 3"

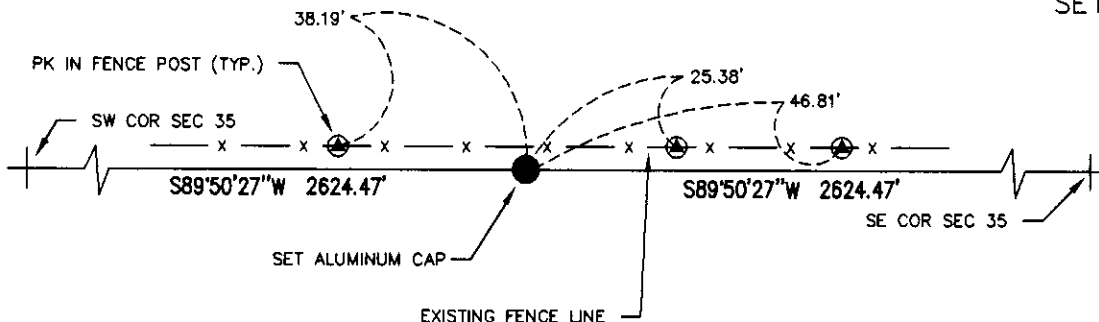
RECORDED 10/23/2001 AT 11:46 AM REC# 306367 BK# 1615 PG# 799  
DEBRA K. LATHROP, CLERK OF LARAMIE COUNTY, WY PAGE 1 OF 1

SET: 3 1/4" ALUMINUM CAP ON #5 x 24" REBAR 0.5' ABOVE THE GROUND  
IN A COLLAR OF STONES STAMPED AS SHOWN.

REFERENCES: SET AS SHOWN



SET MONUMENT DETAIL



Date of Field Work: 7-01 Office Reference: 2-2225.00

**CROSS INDEX DIAGRAM**

A	2	3	4	5	6	7	8	9	10	11	12	13	14	15	16	17	18	19	20	21	22	23	24	25	A	
B																										B
C	6																									C
D		5																								D
E			4																							E
F				3																						F
G					2																					G
H						1																				H
J																										J
K																										K
L																										L
M																										M
N																										N
O																										O
P																										P
Q																										Q
R																										R
S																										S
T																										T
U																										U
V																										V
W																										W
X																										X
Y																										Y
Z																										Z
	1	2	3	4	5	6	7	8	9	10	11	12	13	14	15	16	17	18	19	20	21	22	23	24	25	

Firm/Agency, Address

James D. Voeller, P.E. & P.L.S.

A.V.I., p.c.

2035 Westland Road

Cheyenne, WY 82001

Telephone Number: (307) 637-3400

This corner record was prepared by me or under my direction and supervision.

SEAL & SIGNATURE

